

10080902XX

IP Substations Kits



DESCRIPTION

- Compatible with Vingtor-Stentofon AlphaCom, Vingtor-Stentofon Pulse and iPBXs (SIP)
- Designed to deliver CCoIP® - Critical Communication over IP
- Enables manufacturing of custom made IP substations
- Remote software upgrade, configuration and monitoring
- Integrated data switch with advanced networking and security functions
- Relay output for remote control, e.g. doors, signal lamps and gates
- Powered from the IP network cable using Power over Ethernet (PoE)
- Superb audio quality – high bandwidth codec, active noise cancellation, acoustic echo cancellation and high output power amplifier

The IP intercom kit supports open standards and is compatible with Vingtor-Stentofon AlphaCom, Vingtor-Stentofon Pulse and iPBXs using SIP technology. When working in AlphaCom mode, the IP kit supports special services only available using the Vingtor-Stentofon CCoIP protocol, AlphaCom server. Examples of services are emergency broadcast with volume override, CCTV integration, call priority, and AlphaNet multisite networking and Vingtor-Stentofon event scripting.

The Vingtor-Stentofon IP Substation Kit features the electronics card as used in Vingtor-Stentofon's own IP substations. It is designed to produce stations to the highest specification and for use in the harshest of environments.

Designed for CCoIP® the station card offers a set of critical communication features such as integrated firewall, group call, call priority and over-ride, to name just a few. This enables you to deliver instant, efficient and secure voice and data services in an IP environment.

The station card has one relay and one logical output. These outputs can, for instance, be used to open a door through a connected relay. The operation of the outputs is programmable and controlled by the AlphaCom E exchange.

The IP substation card has an integrated managed data switch providing advanced networking and security features. The integrated switch provides support for:

- Protection from unwanted access
- Quality of Service (QoS) by managing data traffic
- Increased system availability through redundant LAN infrastructure
- Cost efficient installation by providing shared network connections

To provide maximum availability the station comes with advanced supervision functions. The station line test will detect if there is any faults in the network or station electronics. In addition the station supports tone test, testing the complete transmission path including microphone and speaker. The status of the stations is reported to AlphaWeb as well as to 3rd party management systems using SNMP, Syslog or OPC.

*Not supported in Vingtor-Stentofon Pulse mode

The IP Substation Kit itself includes the PCB and microphone.

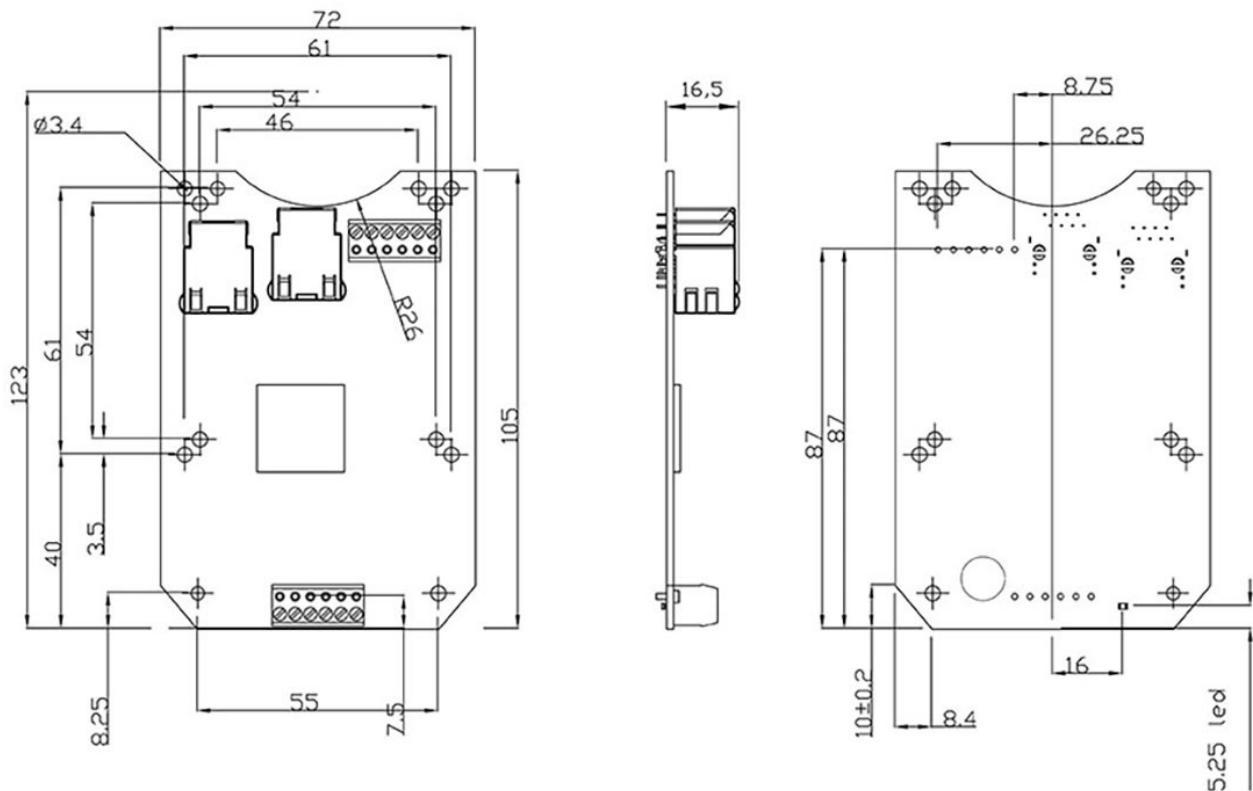
An optional Mounting and Assembly Kit includes gaskets, two inch loudspeaker, loudspeaker housing and mounting block for call LED and microphone.

SPECIFICATIONS

ORDER NUMBER	DESCRIPTION	SHIP WEIGHT
1008090200	IP Substation Kit	0.1 kg
1008090250	IP Substation Kit, conformal coated	0.1 kg
GENERAL		
Dimensions (HxWxD)	110 x 72 x 20 mm	
Weight	250 g	
Call buttons	Connection for 3 NO contacts	
Mounting	Inside custom made stations	
Temperature	-50°C to +55°C	
Relative humidity	0% - 95%	
Power	Power over Ethernet, IEEE 802.3 a-f, Class 0, Local power 19 – 27 VDC, Idle 4W, max. 8W	
Connectors	2 x RJ45 (Ethernet) 10/100 Mbps, Pluggable screw terminals (audio and IO)	
Remote control, Max. switching capacity, Max. voltage relay, Max current relay	3 digital inputs, 1 relay output and one logical output, 30W DC, 60V DC, 1A DC	
SIP	RFC 3261, SIP Info (DTMF), RFC 2833 (DTMF)	
IP protocols	IP v4 - TCP - UDP - HTTPS – TFTP - RTP - RTCP -DHCP - SNMP - DiffServ - TOS – Vingt-Stentofon CCoIP® - SIP	
LAN protocols	Power over Ethernet (IEEE 802.3 a-f), VLAN (IEEE 802.1q)*, Network Access Control (IEEE 802.1x)*, STP (IEEE 802.1d), RSTP (IEEE 802.1d-2004)	
Audio technology	Wideband 200 Hz - 7 kHz (G.722), Telephony 3.4kHz (G.711, Acoustic echo cancellation, Open duplex, Adaptive jitter filter, 1.5 Watt audio output, 8 ohm loudspeaker impedance, External audio output (0 dB, 600 ohm)	
Management and operation	HTTPS (Web configuration), DHCP and static IP, Remote automatic software upgrade, Centralized monitoring, Status LED	
Advanced features	Dual port managed data switch supporting VLAN and network access control	
Compliance	CE and FCC Part 15	

*N'est pas supporté en mode Pulse Vingt-Stentofon

TECHNICAL DIMENSIONS



ACCESSORIES



MOUNTING AND ASSEMBLY KIT FOR IP SUBSTATION

Item Number: 1008091000